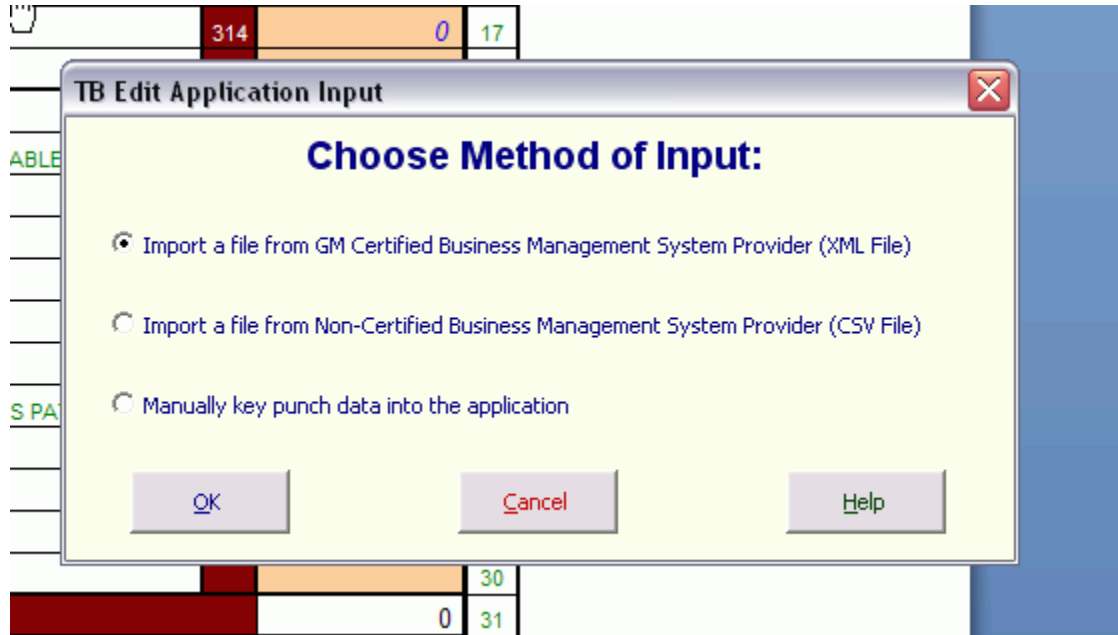


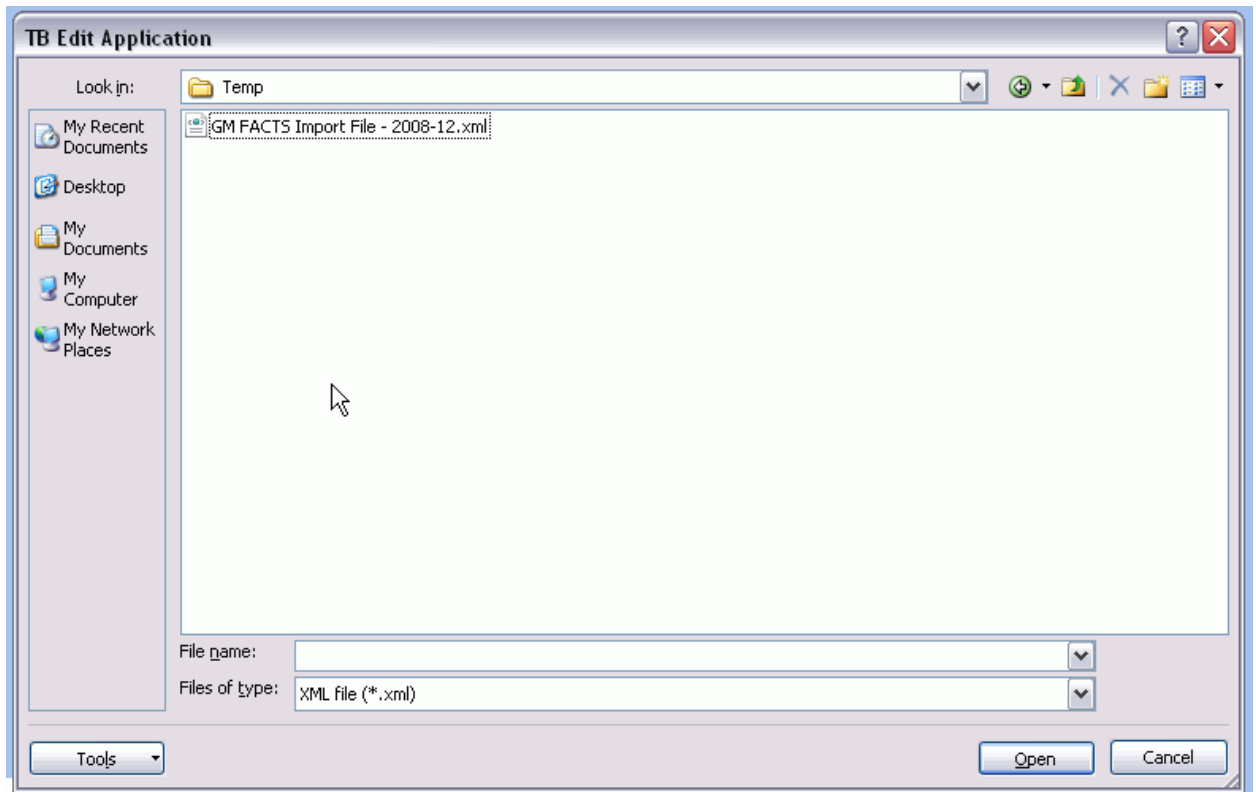
How to run the GM FS:

1. Go to General Ledger – Reports – GM Financial Statement and click Print.
2. You will just need to enter the date and click ok. This will save an .xml file to your C:\temp folder on your computer.
3. See the document titled “How to Download GM FS Template.pdf”
4. After you get the .xls file downloaded, then double click on it and open it.
5. You will get this pop up after you open it.



Choose Import a File from a GM Certified Business Management System Provider and click ok.


- After you do this you will get an Open File dialog box. Click on My Computer, then double click on C: Local Disk, then double click on the Temp folder. Here you should find the .xml file. Click Open.



- This will load all the data into the spreadsheet. Next click the Edit Data button on the spreadsheet.

Ability Mode] - Microsoft Excel

VSSM - TRIAL BALANCE EDIT APPLICATION v150r1 100001 - - PAGE 1

stem Provider		 FACTS 2.0 Financial Analysis Capabilities Through Systems	EDIT DATA	The information in this report is supplied by Dealer and Dealer is solely responsible for the accuracy of the data contained in this report. GM disclaims responsibility for the accuracy of data.	LN
od / DSP ----			SUBMISSION LOG		NO
		DEALER NAME	ANYTOWN PONTIAC, QUICK-GMC		1
1	2009	ADDRESS	123 ANY STREET		2
31	2009	CITY & STATE	ANYTOWN ANYSTATE 12345-1234		3
					4
					5
					6

HIDE BLANK PAGES

This will show you all the errors on the FS.



If you have any errors, give me a call and we'll get them straightened out.